

Welcome to the **CONNECT Summit** 2025

Jill L. Christensen

Tuesday, September 23, 2025



DEPARTMENT OF
**PUBLIC HEALTH &
HUMAN SERVICES**



**MONTANA
CHAMBER OF
COMMERCE**

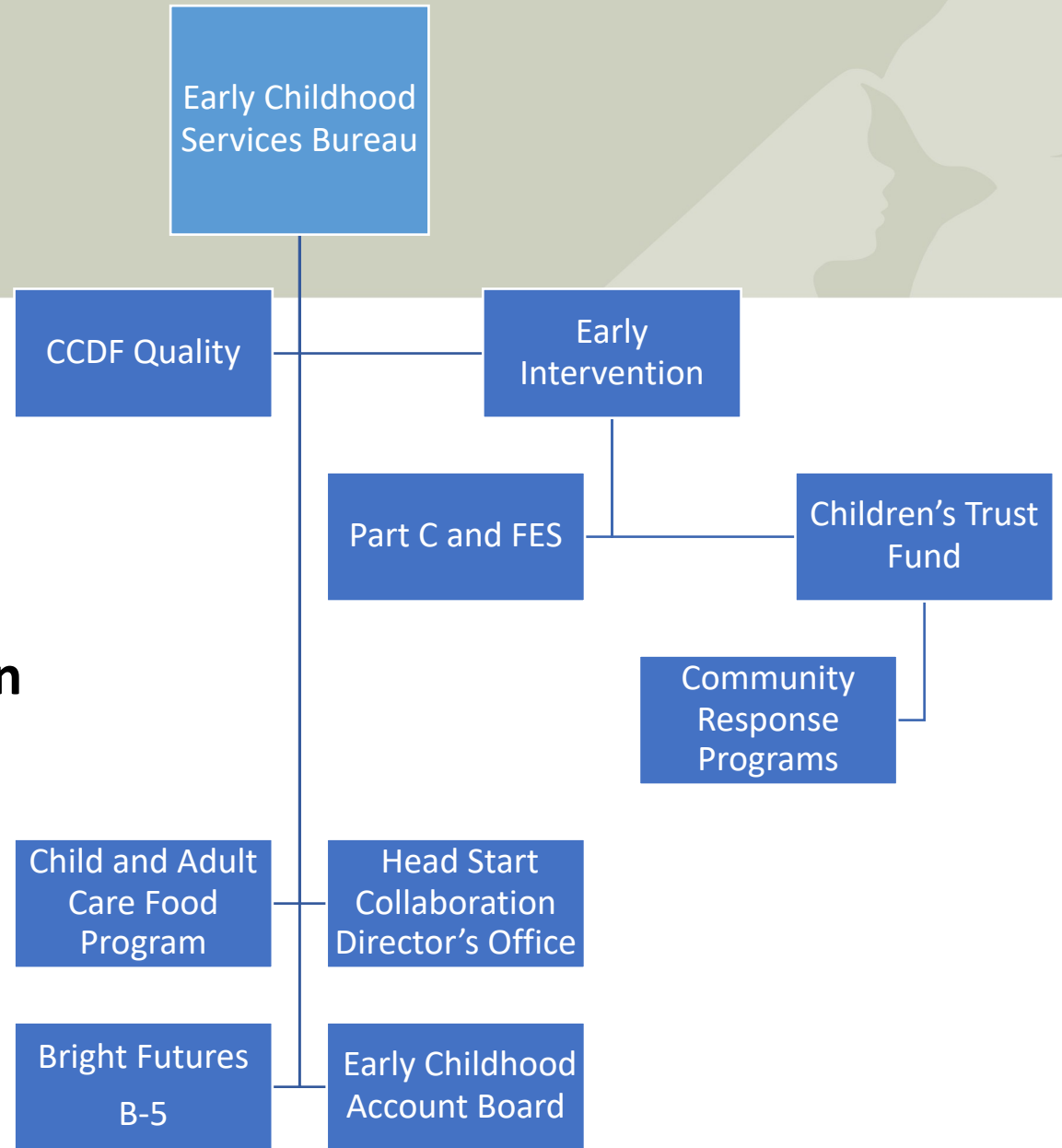


This project is funded in whole or in part under a contract with the Montana Department of Public Health and Human Services. The statements herein do not necessarily reflect the opinion of the department.

How many years?



Early Childhood and Family Support **Division**



Jody Lehman
joseph.lehman@mt.gov
(406) 444-3928

Early Childhood
and
Family Support **Division**

Child Care Bureau

Best Beginnings
Child Care
Scholarship

Child Care
Licensing



DEPARTMENT OF
PUBLIC HEALTH &
HUMAN SERVICES

Child Care Updates:

- Early Childhood Account Board, HB 924
- Montana Access to Quality Child Care System, MAQCS
- Guidance Documents



DEPARTMENT OF
PUBLIC HEALTH &
HUMAN SERVICES

Early Childhood Account Board, HB 924



DEPARTMENT OF
PUBLIC HEALTH &
HUMAN SERVICES

Bill Highlights

- Montana Early Childhood Account Board
- Ten members **appointed** by the governor
 - Two Montana child-care providers; and
 - A parent with a child or children under the age of 6 in child care
- The Montana Early Childhood Account Board shall use the money to fund services and activities under the eligibility criteria:
 - provider support and workforce development
 - quality improvement initiatives
 - affordability initiatives
 - innovation initiatives
 - emergency assistance and disaster relief programs



Bill Highlights

- The MT EC Account Board shall:
 - Determine **funding priorities** for services and activities using the EC system strategic plan and comprehensive fiscal analysis
 - Establish further **criteria** for the receipt of program funds;
 - **Monitor** the expenditure of funds by organizations
 - **Evaluate** the efficacy of services and activities



Bill Funding (?)

- Ten million in revenue added to the account in 2025
- Additional interest from the Growth and Opportunity (GO) Trust will be added over the 2025-26 year
- Adequate appropriation



Progress Updates

- Allocated to the DPHHS (ECFSD---ECSB---Early Learning and Family Support)
- Second posting for account specialist position closed on 09/11/2025, second round of interviews week of 09/22/2025
- Report to the Children, Families, Health, and Human Services and the Budget Interim Committees this week



Montana Access to Quality Child Care System, MAQCS



DEPARTMENT OF
PUBLIC HEALTH &
HUMAN SERVICES

MAQCS

- A comprehensive, outcome-driven Salesforce system
- Replacing CCUBS
- MTX is the vendor selected through the state's competitive bid process
- Contract Execution – 06/21/2025
- Project Go-live 02/09/2025



Functions

Comprehensive

- Licensing
- Subsidy
- QRS

More automated

- Applications
- Email notifications and uploads
- Self-services

Change



Guidance Documents



Early Childhood System Guidance Documents

Documents available this fall!

Early Childhood Needs Assessment

- 1,730 total responses
 - 960 families
 - 774 direct service providers

Strategic Plan

- based on needs assessment and stakeholder input in 2024-25

Comprehensive Fiscal Analysis

- coordinated by Zero to Five Montana, PDG B-5, and P-5 Fiscal Strategies



Products from the CFA

Fiscal Mapping

Fiscal map, summary, analysis charts, and funding catalogues

Cost Modeling

Early care and education direct service cost models and system cost model

System Analysis

Gap analysis of systemic approach, governance, and fiscal needs



Building a Resilient Mind



DEPARTMENT OF
**PUBLIC HEALTH &
HUMAN SERVICES**

Your hopes for the summit



Quick Self-Assessment

- Exercise
- Nutrition
- Sleep
- Silencing the Mind
- Social Safety
- Goal Directedness
- Collective Creativity
- Learning
- Abstraction
- Executive Thinking



Silencing the Mind

- Breathing
 - Deep and slow
 - Longer exhales with each breath
 - Breathe in through the nose and out through the mouth
- Focus
 - Lightly concentrate on an object
 - Burning candle
 - Flower/s or something from nature
 - Picture (non-emotional)



Focus on...

This



Not This



Focus on...

This



Not This



Silencing the Mind

- Breathing
 - Deep and slow
 - Longer exhales with each breath
 - Breathe in through the nose and out through the mouth
- Focus
 - Lightly concentrate on an object
 - Burning candle
 - Flower/s or something from nature
 - Picture (non-emotional)
 - Don't hold your breath
 - If your mind drifts, gently bring it back to the object





The image features a light blue background with various autumn-themed items scattered around. There are several leaves in shades of orange, red, and yellow. Interspersed among the leaves are clusters of small, round blueberries and a few nuts, including what appears to be a walnut. The items are arranged in a way that frames the central text.

thank you