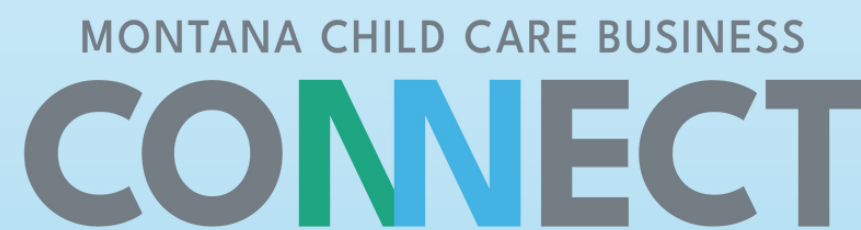


Montana Child Care Business Connect

What is MT Child Care Business Connect?

Thursday, January 5, 2023

Part 1 of 7 in the Tiny Training Series



Small Business Support. Big Community Impact.



Healthy People. Healthy Communities.
Department of Public Health & Human Services



ZEROTOFIVE
MONTANA

Montana Child Care Business Connect is funded under a Contract with the Montana Department of Public Health and Human Services (DPHHS) and the American Recovery Plan Act (ARPA).

The statements herein do not necessarily reflect the opinion of the Department.

What is: The 'Tiny Training Series'

Statement of Purpose

- Series of seven, 30minute webinars
- 2nd and 4th Thursdays every month at 1:30pm
- Attendance of four webinars equals 2 hours of ECP credit
- Define basic business concepts
- Feature Business Connect Partners
- Prepare participants for 'Howto' Series in Spring/Summer 2023

2023 Schedule

- **January 5:** What is MT Child Care BusinessConnect?
- **January 12:** What is a BusinessPlan?
- **January 26:** What are the 4 Ways to Make a Profit?
- **February 9:** What is a Cooperative?
- **February 23:** What is Cost-Informed Rate Setting?
- **March 9:** What is RiskManagement?
- **March 23:** What are Different Types of Marketing?

What is:



ZEROTOFIVE
MONTANA

Founded in:

2018

Formed as:

501(c)3 nonprofit

Our Promise is:

To stabilize, innovate, and build the early childhood system in Montana so families and communities can thrive.

Expansion in:

2022; with unprecedented investment in childcare industry through MT DPHHS and ARPA funds.

STATEWIDE COLLABORATION TO ADDRESS CHILD CARE SOLUTIONS



TIERS OF PARTICIPATION IN FAMILY FORWARD MONTANA

The following list ranges from organizational practices & business model adapt with relative ease, to those requiring a more concerted investment, often coming with more planning and support able to be provided.

TIER 1: ORGANIZATIONAL PRACTICES

- Offer flexible schedules, such as a compressed work week
- Offer telecommuting options
- Offer voluntary reduced work hour options
- Provide the option to bring an infant to work for a period of time (i.e. up to 4 working hours, some planning, and support able to be provided)
- Partner with employees on necessary resources and identify important persons at home

TIER 2: FINANCIAL ASSISTANCE

- Offer Dependent Care Assistance Plans (DCAP)
- Provide Flexible Spending Accounts (FSA)
- Provide Child Care Subsidies
- Offer Paid Family Leave

TIER 3: ACCESS TO CARE

- Provide on-site child care
- Provide on-site or local high-quality provider
- Create a co-op child care center to serve employees of participating companies
- Create a co-op child care center for targeting to a local child care provider
- Provide home-based support for targeting to a local child care provider
- Provide in-home care services or family home provider through the state's Quality Care System, including administrative supports, etc.

FOR MORE INFORMATION, CONTACT CA@RAISE.MT.gov OR VISIT WWW.FAMILYFORWARD.MT.GOV



COLLABORATION

DPHHS, DLI, Gov Office, RAISE, EconD/MCDC, employer/entrepreneur, philanthropy (FMC), Zt5 & Community/Industry Partners

What is the work of Zero to Five MT?

Through statewide and local community partnerships, we work to identify and advance innovative and sustainable program and policy solutions that work for Montana.

CONNECT.

Bridge partnerships and build relationships with key stakeholders

SUSTAINABLE SOLUTIONS.

Community-led projects developed through our core work

CONVENE.

Support Multi-sector Policy Coalitions

COMMUNICATE.

Develop resources to support action, advocate, and bring information to a statewide audience.



ZEROTOFIVE
MONTANA

Policy Team

- Caitlin Jensen, Executive Director caitlinj@zerotofive.org
- Jenna Rhoads, Policy Manager jennar@zerotofive.org
- Alex Dubois, Business & Community Engagement Manager alex@zerotofive.org
- Carrie Spotted Bear, Tribal Policy Coordinator carriesb@zerotofive.org
- Karen Gilbert, Communications Manager kareng@zerotofive.org

Additional Positions currently hiring for:

- Development & Operations Director
- Program & Office Coordinator

MONTANA CHILD CARE BUSINESS

What is: **CONNECT**

Launched in: 2022

Focusing on:

Supporting communities and entrepreneurs with business elements of starting, owning and operating child care programs. We are Montana's statewide hub for child care business development and innovation.

Critical Areas:

Training & Technical Assistance, Mentorship, Consultation, Community Capacity building, Web-Resource Hub

MONTANA CHILD CARE BUSINESS
CONNECT

We are here for you!

MT Child Care Business Connect

- Rhonda Schwenke, Program Director rhondas@zerotofive.org
- Jason Nitschke, Senior Child Care Business Advisor jasonn@zerotofive.org
- Heide Borgonovo, Communications & Outreach Coordinator heideb@zerotofive.org
- Alex Dubois, Business & Community Engagement Manager alex@zerotofive.org
- Caitlin Jensen, Executive Director caitlinj@zerotofive.org
- Jennifer Owen, Project management/Mentoring Program Manager jowen26@gmail.com

Additional Positions currently hiring for:

- Community Navigator
- Program & Office Coordinator

MONTANA CHILD CARE BUSINESS
CONNECT

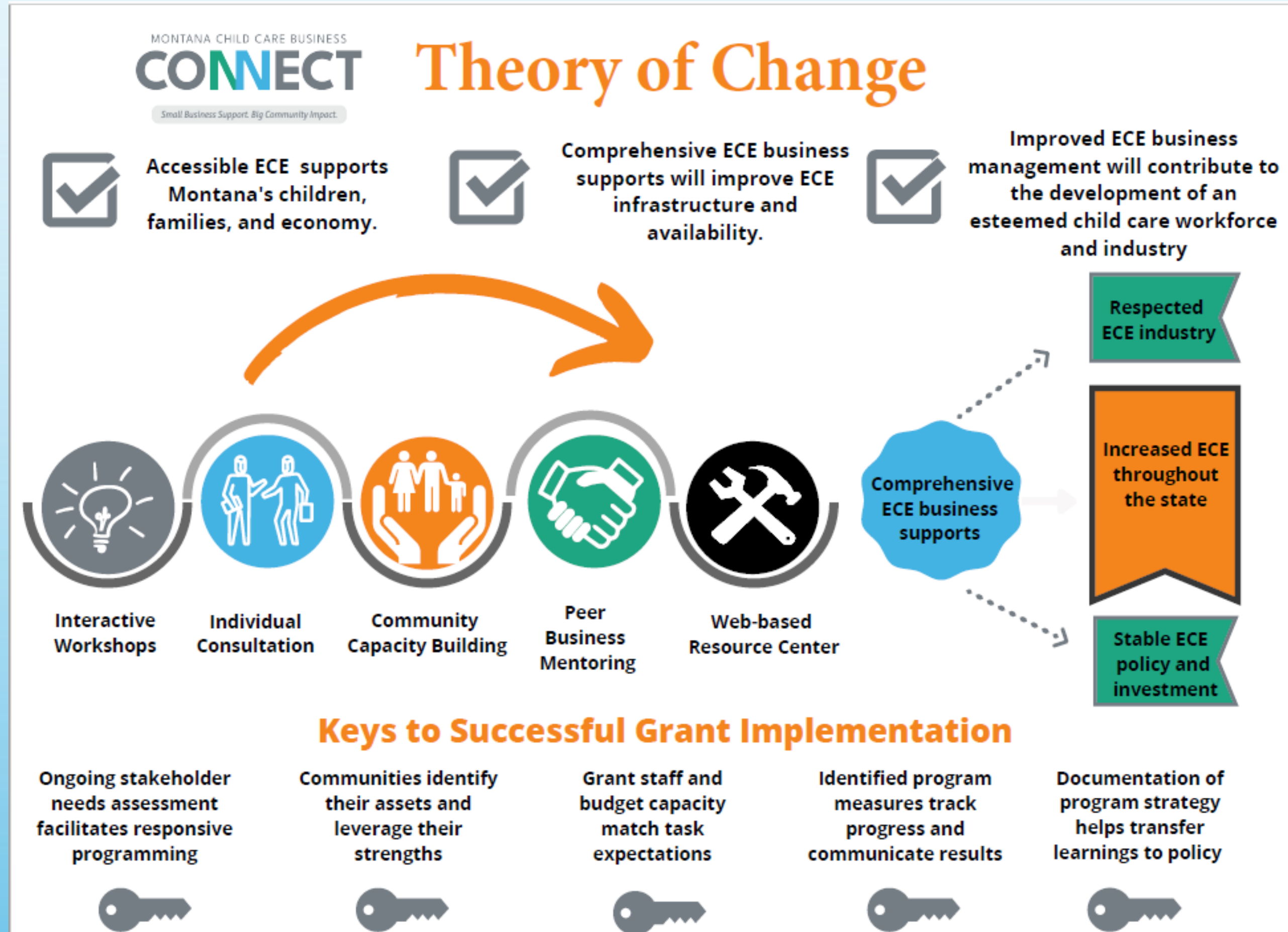
External State & National Partners

- MT DPHHS Early Childhood & Family Support Division
- Program & Policy Insight, LLC – project strategy & evaluation
- First Children's Finance
- Prenatal to 5 Fiscal Strategies
- MT Child Care Resource & Referral Agencies
- RAISE Montana
- MT Small Business Development Center
- MT Cooperative Development Center
- UM Center for Children, Families, & Workforce Development
- MT Department of Labor & Industry
- MT Department of Commerce
- State and local Chambers of Commerce
- Child Care Aware of America

More to come!

MT Child Care Business Connect Theory of Change

By focusing on training, consultation, communities, mentorships, and resources we will meet our goals of having a well-respected ECE industry in MT with increased slots for children and more stable policies and investments.



INTERACTIVE WORKSHOPS

GOAL:

Provide relevant, timely, and professional business training content

Trainings are available to all provider types in all phases of business development and operation.

Training content is primarily related to

- ✓ financial operations*
- ✓ business management*
- ✓ attracting and retaining early childhood workforce*

INDIVIDUAL CONSULTATION

GOAL:

To support the creation and maintenance of high-quality child care businesses throughout the State of Montana.

2 main approaches

- *direct consultation with MCCBC Project Consultation Coordinators*
- *independent T&TA through a network of industry professionals.*

T&TA priorities include:

- ✓ *business stabilization*
- ✓ *assessments and planning*
- ✓ *start-up or expansion planning*
- ✓ *financial planning and projections*
- ✓ *support for employer-sponsored child care models*
- ✓ *funding opportunities and strategies*

COMMUNITY CAPACITY BUILDING

GOAL:

To develop a series of tools and techniques to support identified communities in systems-level planning and problem-solving to establish child care where the local market presents unique challenges to business development.

Services offered will include:

- ✓ *readiness assessments and feasibility studies*
- ✓ *gap analysis and problem-solving*
- ✓ *strategic planning*
- ✓ *recommendations of successful, collaborative, and sustainable models*
- ✓ *technical expertise on funding models and strategies.*

PEER BUSINESS MENTORING

GOAL:

To create a structured business incubator/accelerator for new and expanding child care businesses throughout the state.

Business owners will be matched with peer mentors and supported by subject-matter experts for a 12-month cohort.

WEB-BASED RESOURCE CENTER

GOAL:

To create a comprehensive, multi-functioning online hub for child care businesses to access resources, toolkits, business briefs, guides, networking, T&TA, and resources from local, state, and national partners.

ADDITIONAL PROJECTS

Cost of Care Tool

- MCCBC is working with Prenatal to 5 Fiscal Strategies to develop a tool to determine cost of care that will be very specific to MT and customizable to different types of child care business models

Insurance

- MCCBC is working towards a solution for a shared insurance plan program that will stabilize insurance for child care programs and allow for more affordable rates

Summary

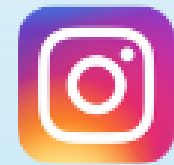
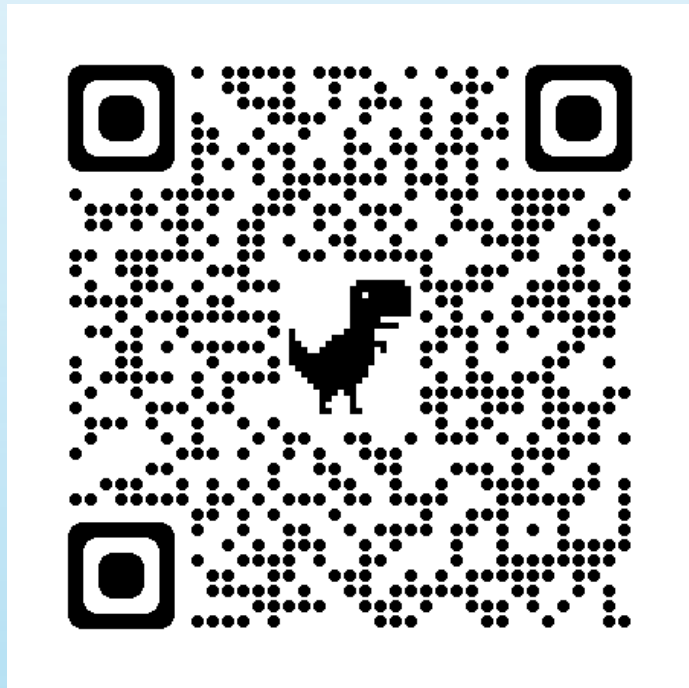
Please take a few minutes to complete our survey, your feedback is invaluable!



Connect with Business Connect!

Sign up for our newsletter!

WWW.ZEROTOFIVE.ORG



@zerotofivemt



@ZeroFiveMT



@zerotofivemt



@zerotofivemontana

